



Top 10 Enterprise Power BI Challenges

Bob Rubocki – Practice Manager, BI Architect

May 14, 2019



Agenda

- Background
- Top 10 (in no particular order)
- Questions



Bob Rubocki

- Practice Manager & BI Architect, Pragmatic Works



- brubocki@pragmaticworks.com



- [linkedin.com/in/robertrubocki](https://www.linkedin.com/in/robertrubocki)



- [@BobRubocki](https://twitter.com/BobRubocki)



- bobrubocki.wordpress.com



How To Use This List

If you are just getting started

Guidance and considerations

If you are already using Power BI

Does this hit home?

How Was this List Created?

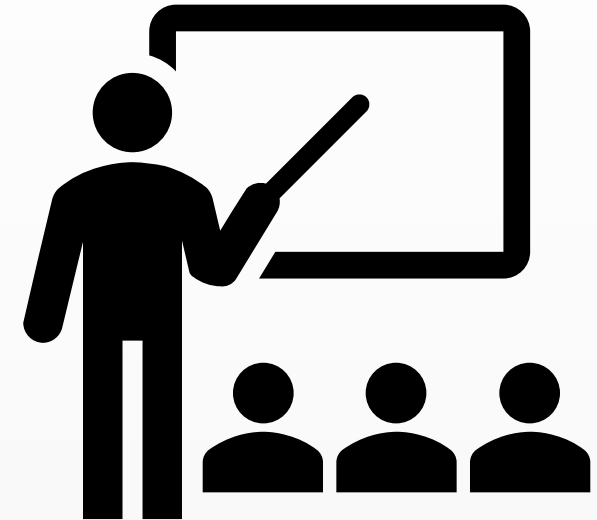
Surveys

Consulting

Training

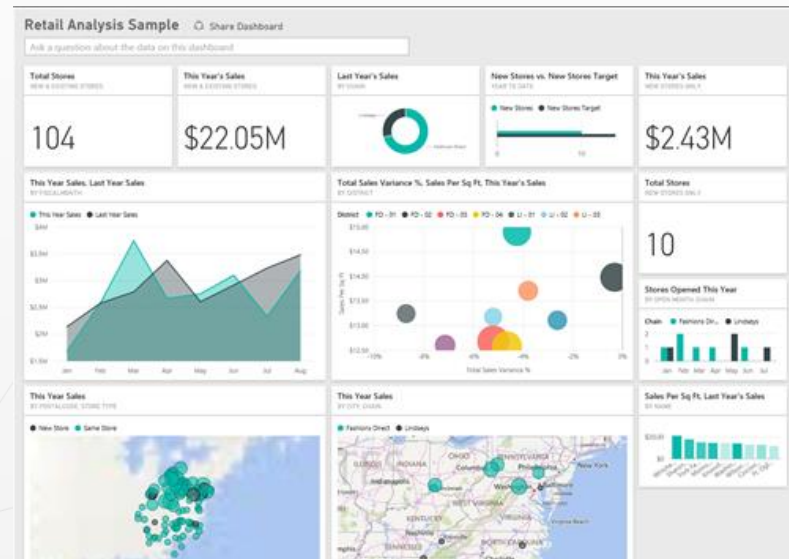
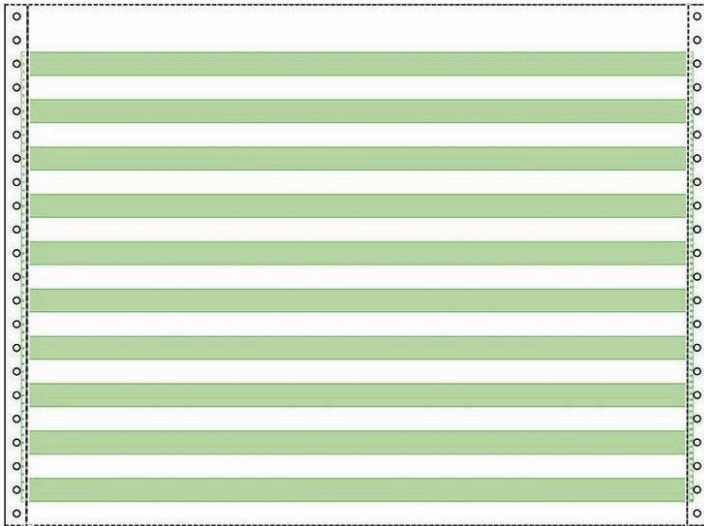
Team Readiness

- Developer, report builder training
- Report consumer training
- Administration support



Report Design

- Layout
- Navigation
- Summary vs details
- Visualizations
- Colors
- Style
- Mobile
- Interactivity
- Narrative



Security Management

Data
source
access

Report
access
(view/edit)

Sharing
reports
with peers,
others

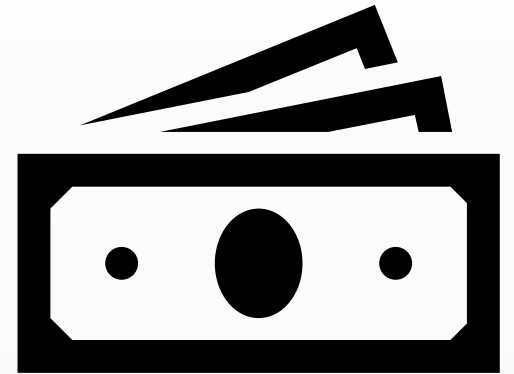
Report
data access
(Row Level
Security)



Azure Active Directory

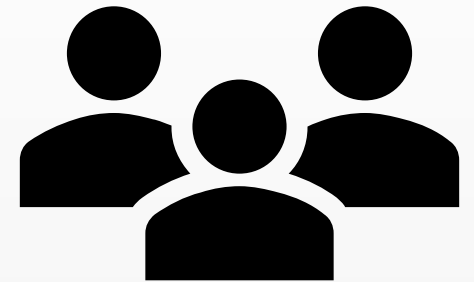
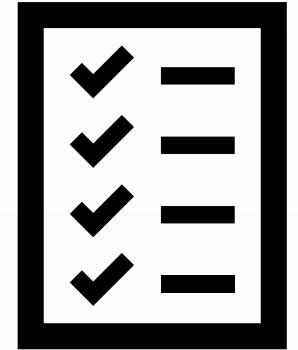
License Management

- Office 365
- Pro licenses
- Power BI Premium
- Power BI Report Server (on-premises)
- Power BI Embedded
- Adding/removing licenses



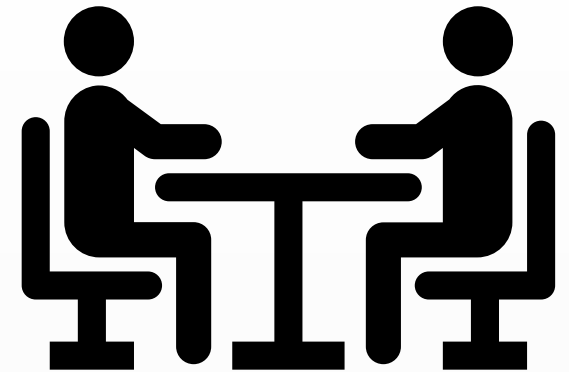
Standards and Data Governance

- Focus on internal audience
- Communication is key!
- Organization must agree on what data is “correct”
- Identify data “certifiers”
- Communicate data refresh timing
- Limit publishing permissions to group that certifies reports meet “official” organizational criteria
 - Data sources
 - Security
 - Design



Compliance

- Internal AND external
 - Platform and your implementation of it
 - Report on security procedures
-
- Internal compliance teams must communicate requirements to the entire organization



Architecture Best Practices

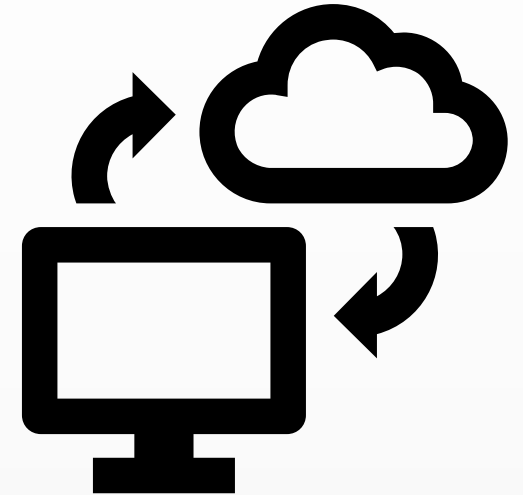
Cloud vs on-prem
(Power BI Report
Server)

Modeling in Power
BI vs Analysis
Services

On-prem Gateway

Power BI import vs
DirectQuery (live
connection)

Where to apply
security (data
layer, reporting
layer)



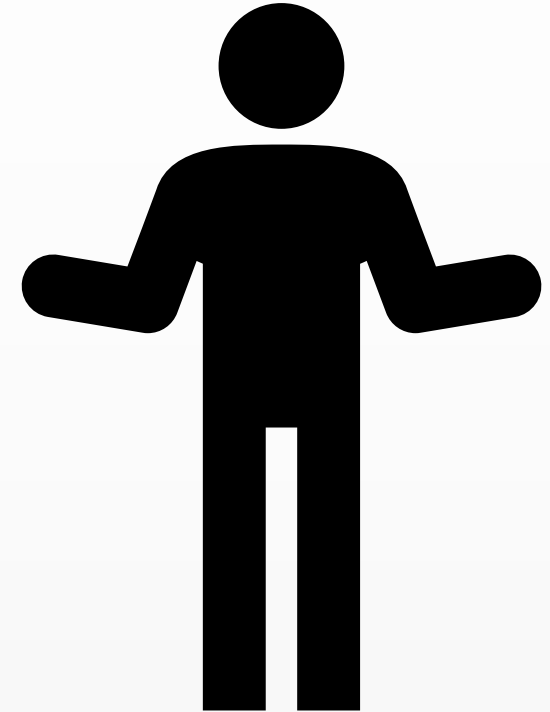
Pace of Product Change

- Power BI Desktop – updates monthly
- Power BI service – cloud updates
- Many organizations are used to managing software upgrades on their own
- Shorter product roadmap/horizon (3 years vs 6 months)



New Feature Adoption

- Power BI Desktop and service
- Keeping up with new features
- All new Power BI use cases
- How to use new features
 - Apps
 - Bookmarks and navigation
 - Report page tool tips
 - Data Flow
 - Machine Learning with Data Flows

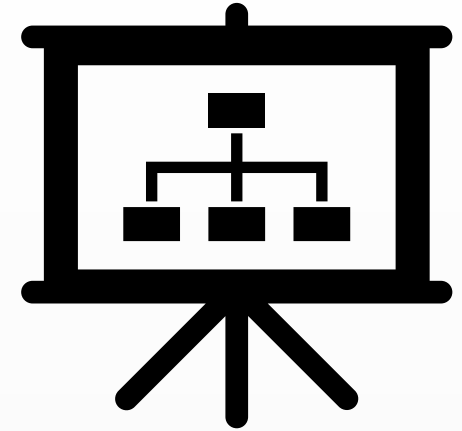


Data Culture

- People want good, clean data at their fingertips
- People want the ability to perform insightful analysis
- People want to use predictive or advanced analytics

- ALL REQUIRE GOOD DATA!

- Capturing, curating good data takes EFFORT
- OFTEN requires changes in status quo
- Sr Management must drive and encourage required changes



We Can Help!

Pragmatic Works can help you with these challenges!

Respond YES to the exit survey for more information.



Questions?